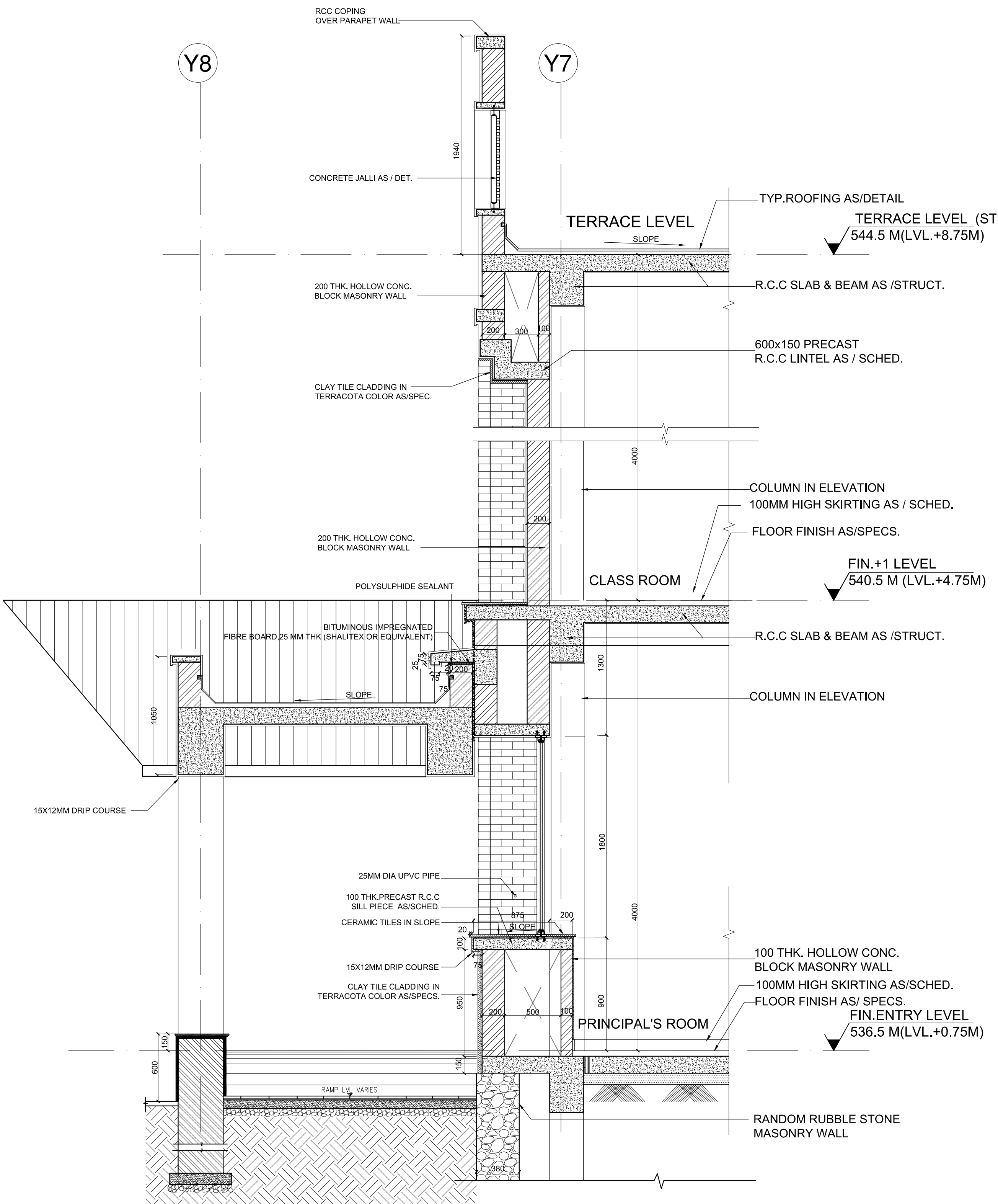
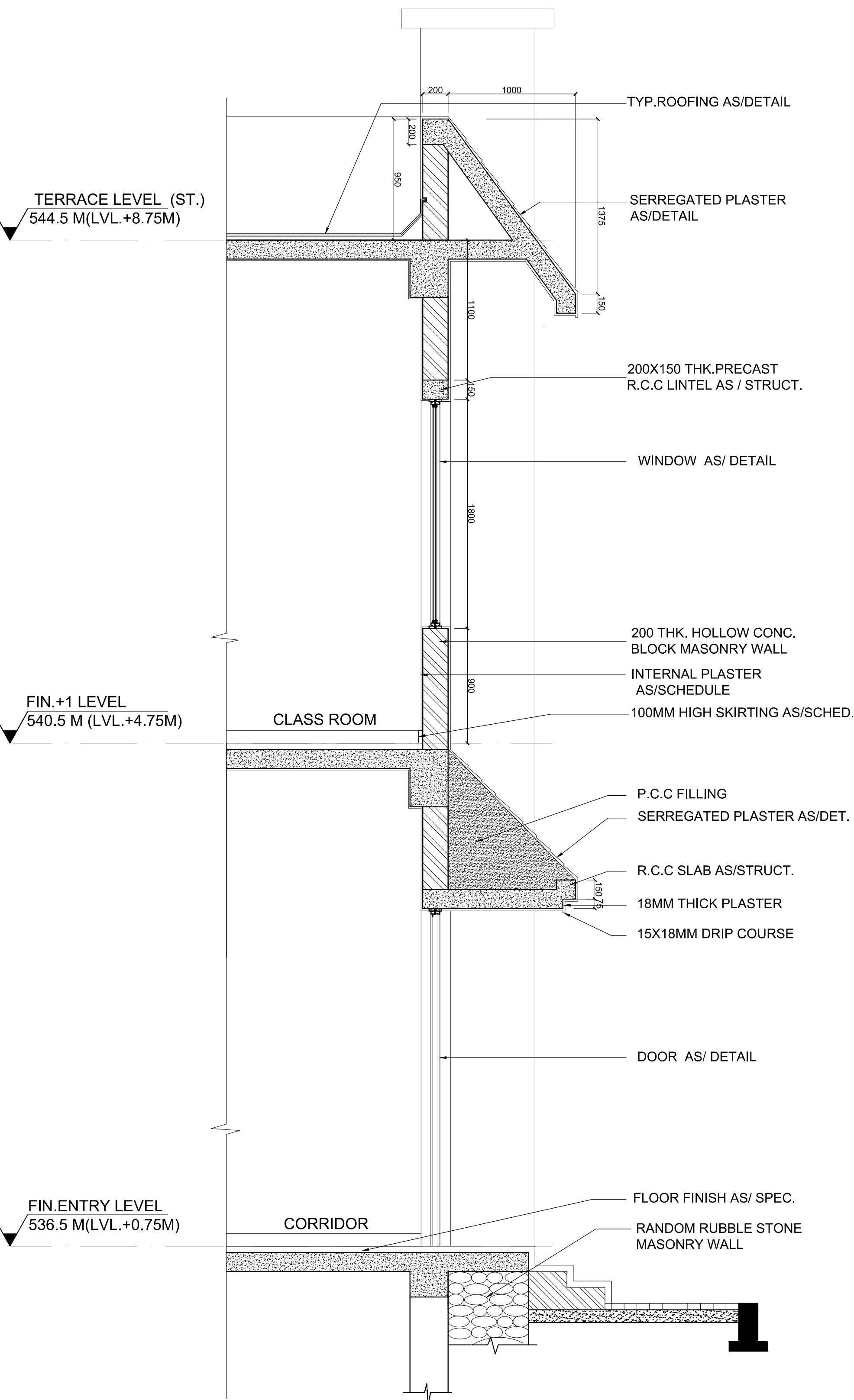




NOTE:
FOR GENERAL NOTES REFER DWG.
NO. 2009088/AR(AB)/T/GEN-01



MASONRY DETAIL AT - 1
SCALE 1:25



MASONRY DETAIL AT - 2
SCALE 1:25

KD.	ISSUED	DESCRIPTION	DEALT	CHECKED	APPROVED
R E V I S I O N S					
THIS DRAWING HAS NOT BEEN PUBLISHED AND IS THE SOLE PROPERTY OF CONSULTING ENGINEERING SERVICES (INDIA) PVT. LTD. AND IS ISSUED TO THE PARTY FOR THE SPECIFIC PURPOSE AS STATED IN THE AGREEMENT AND IT SHALL NOT BE REPRODUCED, COPIED, LENT OR OTHERWISE DISPOSED OF DIRECTLY OR INDIRECTLY, NOR USED FOR ANY OTHER PURPOSE OTHER THAN FOR WHICH IT IS FURNISHED.					
		CLIENT INDIAN INSTITUTE OF SCIENCE EDUCATION & RESEARCH THIRUVANANTHAPURAM			
PROJECT		IISER - TVM CAMPUS, VITHURA THIRUVANANTHAPURAM			
PURPOSE	FOR TENDER	ISSUED	22-07-2014 MEERA EDWIN		
SCALE	1:25@A1	ARCHITECTURAL DRAWING			
DEALT	PRIMARY SCHOOL				
CHECKED	MASONARY DETAILS				
APPROVED	T.C.	DRG. NO. 2009088/AR(AB)/T/SCH-04			Rev TO.
	N.P.S.				
PROJECT DESIGN CONSULTANT					
 CONSULTING ENGINEERING SERVICES (INDIA) PVT. LTD. NEW DELHI MUMBAI KOLKATA THIRUVANANTHAPURAM TEL: 011-41392300 (DELHI), 0471-2726048 (THIRUVANANTHAPURAM), Web : www.cesinter.com					